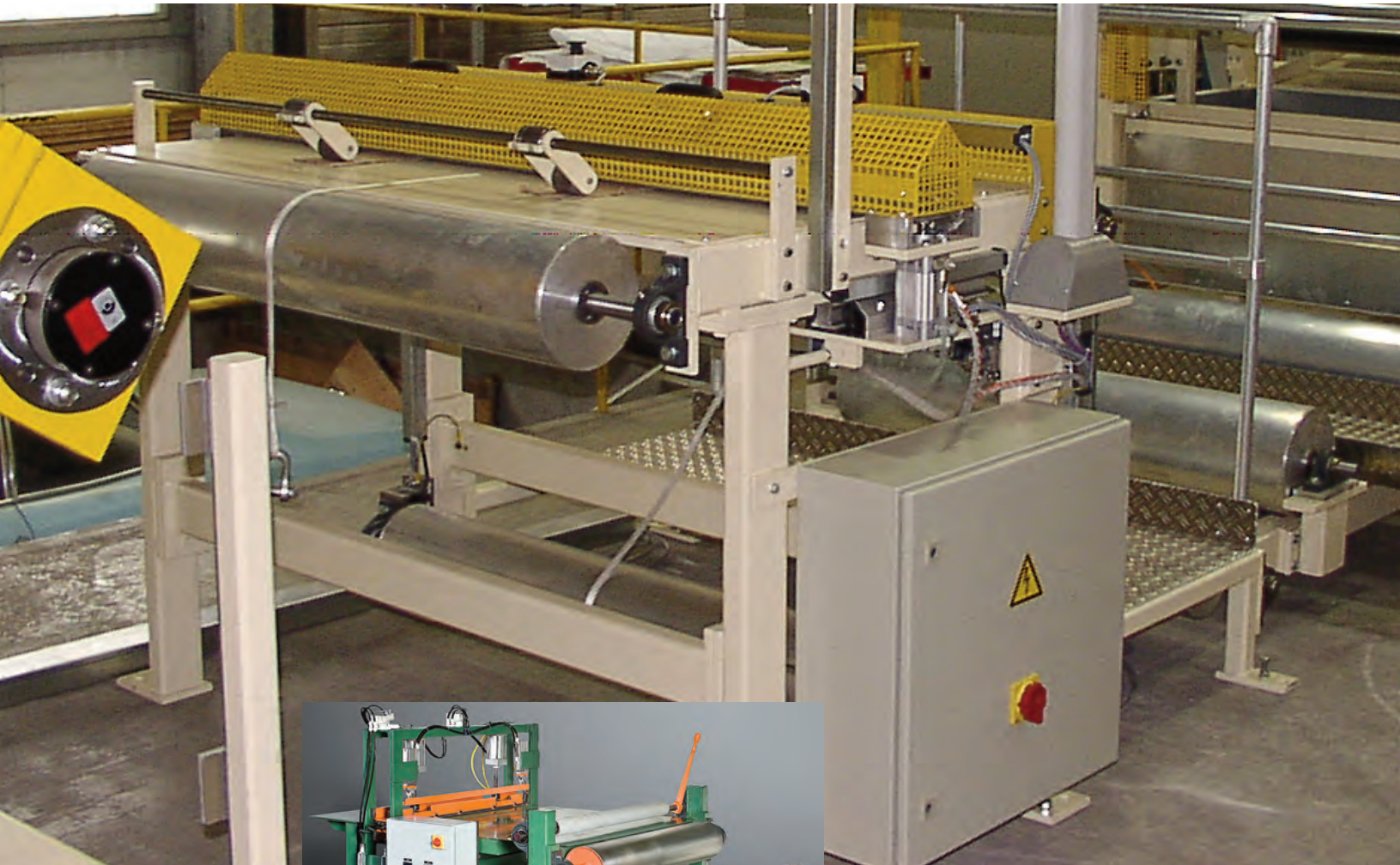


# Splice Tables



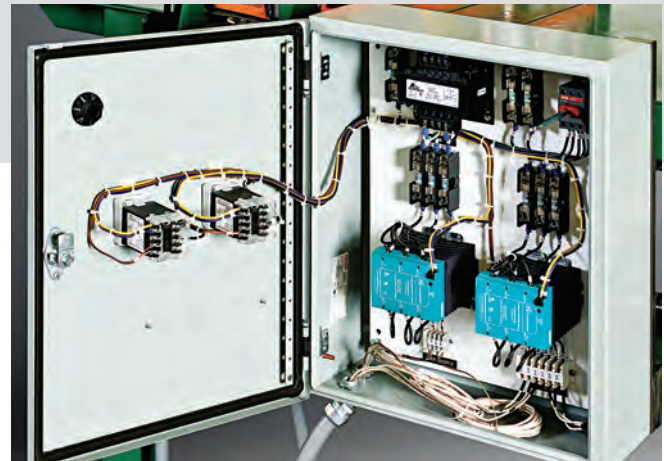
**Durable ■ Adaptable ■ Reliable**

## Splice Table ST20-01

The model ST20-01 Splice Table is used to join the leading end of a new roll of reinforcement material to the trailing end of a recently expired roll. Reichel & Drews offers two types of splice tables available in various widths depending on your production needs.

The manual splice table (not shown in photos) is a low cost solution for splicing various types of reinforcement material from fiberglass to polyester. Splices are made manually using a simple hand held cutoff knife, hot melt tape or clay tape and a manually operated heated iron.

For greater reliability and consistency of splices our semi-automatic splice table is recommended. The semi-automatic splice table utilizes an adjustable timer set, heating plate element that evenly and consistently heats the hot melt tape resulting in a strong repeatable splice. The semi-automatic splice table is available in various configuration to meet your specific production requirements.



### Features:

- Semi-Automatic Operation
- Pneumatically actuated heating element for even pressure distribution
- Adjustable heating element temperature for optimization with various hot melt tapes
- Adjustable heating cycle time for consistent bonding
- Easy operator access
- Optical alert upon end of roll



Model	Operation	Splice Method	Reinforcement Types	Reinforcement Widths
ST20-01M	Manual	Clay Tape	Fiberglass	20 in. to 79 in.
		Hot Melt Tape	Polyester	(500 mm to 2000 mm)
ST20-01SA	Semi-Automatic	Hot Melt Tape	Fiberglass Polyester	20 in. to 79 in. (500 mm to 2000 mm)



**International Headquarters**  
 1025 West Thorndale Avenue  
 Itasca, Illinois, USA 60143  
 Telephone: (630) 773-2500  
 Fax: (630) 773-3414  
 www.reicheldrews.com  
 Email: reicheldrews@therdigroup.com



**Reichel & Drews GmbH**  
 Laubanger 18  
 D-96052 Bamberg  
 Germany  
 Telephone: +49 (951) - 9682584-0  
 Fax: +49 (951) - 9682584-99



**Asia**  
 Jin Du Mansion  
 3#, 1st District, Fangcheng Garden  
 Fang Zhuang  
 Beijing 100078, China  
 Telephone: 86-10-67644613  
 Fax: 86-10-67620684  
 Email: rdijqyao@public3.bta.net.cn

*Experience • Quality • Delivery • Value*